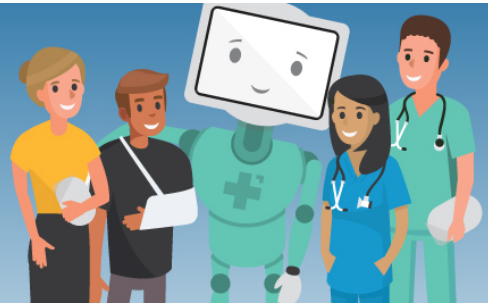


# Our digital health is advancing.

✔ TRUSTED    🔒 SECURE    ⏱ RELIABLE



## Access patient images and reports in real-time with IntelConnect

We have implemented a new PACS viewing application at Gold Coast University and Robina Hospitals. The system has replaced Agfa PACS and is supplied by Intelrad Medical Systems. It enables GPs to access patients' imaging results through a web-based system as soon as they are available, meaning a quicker turnaround time and faster treatment. Ultimately, patients will benefit from an improved connection between their community referrer and our Medical Imaging Departments.

### Why you need to apply for an account

- A zero footprint, light weight clinical image viewer which provides basic image review functionality
- It's accessible from virtually any compatible web browser and available 24/7
- Displays images and reports in an easy-to-use web application
- Access is independent to accounts you may have established with private sector providers
- If you are interested in using IntelConnect to access Gold Coast Health imaging records, click 'Apply for an account' on the Gold Coast Health IntelConnect homepage, visit: <https://gchhspacs.health.qld.gov.au/>

### Distribution of the final report will be automatic if you are the primary referrer

- Results will be sent according to your recorded preference (fax or electronic messages to your practice management software inbox)
- Patients may also request a copy of their Radiology report to be transferred to you under the *Right to Information Act 2009* (RTI)

Visit [www.goldcoast.health.qld.gov.au/inteleconnect](http://www.goldcoast.health.qld.gov.au/inteleconnect)

For urgent enquiries please contact Gold Coast Health's PACS Support via [GCHPACSAdmin@health.qld.gov.au](mailto:GCHPACSAdmin@health.qld.gov.au) or phone 07 5687 4406.